

# HOW TO SIZE AND SUBMIT DIGITAL IMAGES FOR PROJECTED COMPETITION

---

The source of the image can be any scanned photo, negative, 35mm slide or a digital camera. It is recommended that in order to be compatible with most digital projectors, the files be in the sRGB color space.

## Preparing the Images

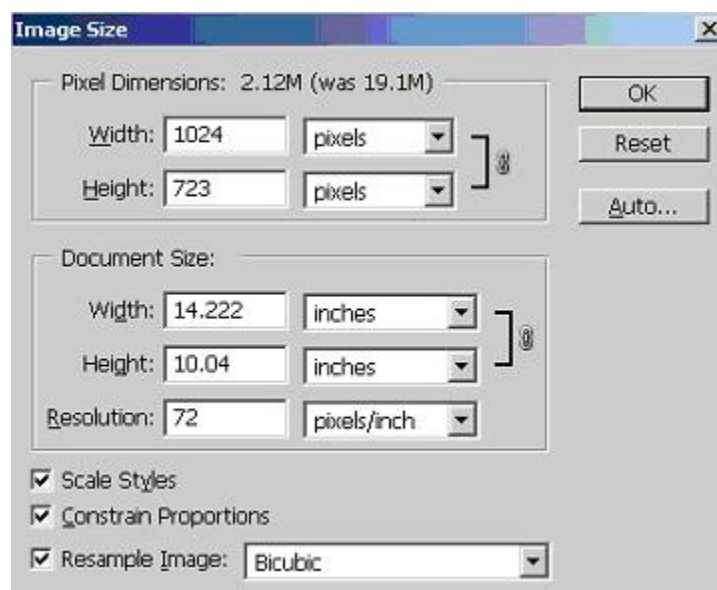
You should save the original image, make a duplicate to use for resizing, and for submitting. These instructions remain the same for every digital image you submit to Pictorial, Nature, and PJ.

1. Open file in Photoshop or Elements. Go to **Image> Image Size** (note: in some versions of Elements, go to **Image>Resize>Image Size**)
2. Check the box **Resample Image**.
3. Resize your final image to a maximum of either 1024 pixels WIDE and/or 768 pixels HIGH. Width or height may be LESS, but not more than these maximums.
4. Click **OK**. Image will now fit into 1024 x 768 dimensions or less.

NOTE: Ignore what happens in the Document Size box. It only applies when you want to print. It does not apply when you change pixels dimensions.

NOTE: Be aware that images with a vertical orientation must still not exceed 768 pixels high, and thus, your horizontal will be much less than 1024 pixels wide. This does not affect quality of projection.

### EXAMPLE OF IMAGE SIZING:



## HOW TO SIZE AND SUBMIT DIGITAL IMAGES FOR PROJECTED COMPETITION

---

Image is now ready for the next step

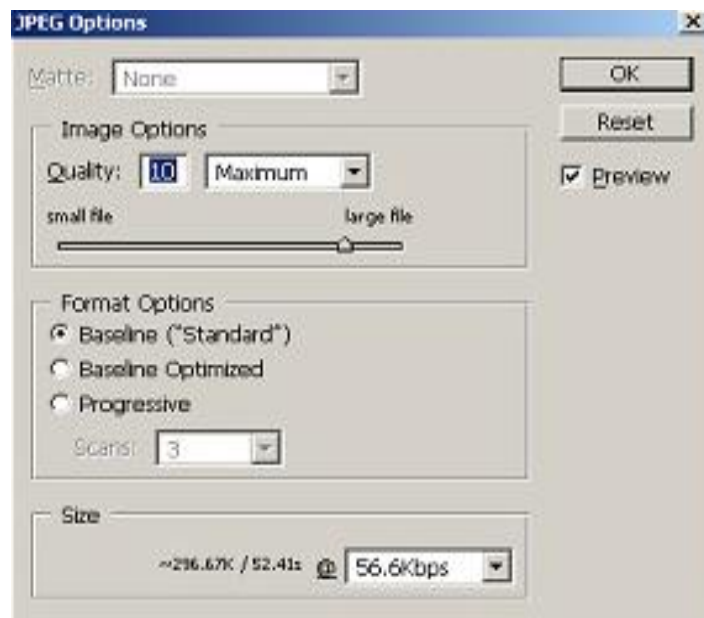
### 5. File Sizing/Format:

- a) Under **File> Save As**, Enter the file name beginning with your first and last name followed by title, then category (ex. FIRST LAST\_ title\_ category.jpg)

Category: Pictorial, Nature, PJ

Please use caps for your name and lower case for image title and category.

- b) Choose JPEG ...SAVE. A box will open titled **JPEG Options**.



- c) under **Image Options**: choose **Quality 10,11 or 12**.

- d) under **Format options**: choose **Baseline**.

Click **OK** and THIS IS THE FILE YOU WILL SUBMIT.

CHECK YOUR IMAGE to be sure the image you now have is a JPEG file and image dimensions fit within 1024 pixels WIDE and 768 pixels HIGH.

- DO NOT CONFUSE THE IMAGE PARAMETERS WITH ANY PRINTING PARAMETERS. THEY ARE NOT RELATED!

---

**Email Digital Images to Your Club's GSCCC Representative**